

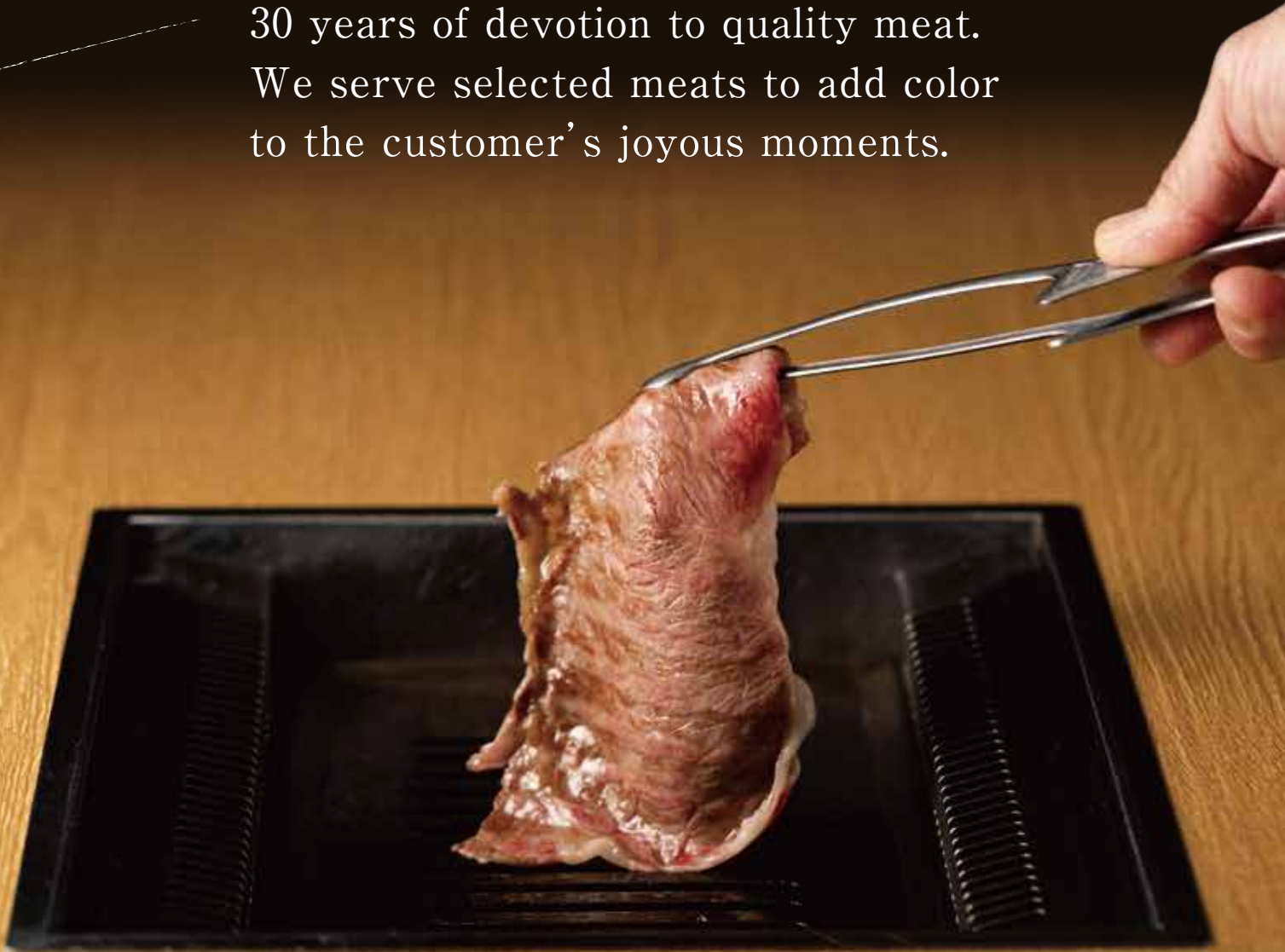


仙匠

YAKINIKU SENSYO

SINCE 1992

30 years of devotion to quality meat.
We serve selected meats to add color
to the customer's joyous moments.



Scan the QR code to
see the English
version of the menu.



QR코드를
스캔하면 한국어
메뉴가 표시된다.



扫描二维码可以看到
中文(简体)版的菜单。



SENSHO'S SUKIYAKI & SHABU-SHABU



S u k i y a k i

For one person **¥7,700**

* Minimum order is two servings

● Beef + ● Vegetables + ● Kishimen Noodle

Since our establishment in 1992, we have served only the best Kuroge Wagyu from the Kyushu area along with our preeminent homemade Sukiyaki sauce.

At Sensho, the first serving of Sukiyaki will be prepared by our staff.

S h a b u - s h a b u

For one person **¥7,700**

*Minimum order is two servings

*All listed prices include tax.



S a s h i m i



Sea Urchin Wrapped in Beef Toro

Our specialty



Sea Urchin
 Wrapped in
 Beef Toro
 (served with caviar)

¥2,860



Raw Beef (Yukke)



Raw Beef **¥2,200**
 (Yukke)



Tongue (Tan) Sashimi

- Beef Sashimi..... ¥1,760
- Tongue (Tan) Sashimi..... ¥1,760
- Outside skirt (Harami) Sashimi.... ¥1,760
- Omasun (Senmai) Sashimi ¥880



Three Kinds of Assorted Sashimi (For two servings)



Three Kinds of Assorted Sashimi
 (Beef, Tongue, Outside skirt)

Two servings¥1,760

Four servings¥3,520

SENSHO'S COURSE SELECTION



Lots of Savory Food Course

For one person **¥11,000**

* Minimum order is two servings
[Total of ten dishes]

Recommended for those who want to try all the one-rank delicious food, including Sensho's famous beef tenderloin wrapped with sea urchin and grilled shabu-shabu.



• Sea Urchin Wrapped in Beef Toro

- Assorted Sashimi

Beef Sashimi, Tongue (Tan) sashimi, Wine flavored Sashimi, Omasun (Senmai) Sashimi

• Yaki-shabu

- Grilled with Salt
- Premium Outside Skirt (Jo-Harami),
- Premium Tongue (Jo-Tan),
- Premium Sirloin (Jo-Rosu)
- Grilled with Sauce
- Short rib (Kalbi),
- Assorted offals (Horumon)
- Assorted Kimuchi
- Korean pancake (Chijimi) with cheese and seafood
- Seasonal Salad
- chef's choice rice dish
- chef's choice dessert

Smaller but Rich Course

For one person **¥6,600**

* Minimum order is two servings [Total of five dishes]

This is a course to enjoy quality over quantity in an elegant manner.



• Sea Urchin Wrapped in Beef Toro

- Yaki-shabu
- Grilled with Salt

Premium tenderloin(jo-hire)

- Premium Sirloin (Jo-Rosu),
- Assorted Offals (Hormon)
- Udon Noodle with Beef
- Dessert

SENSHO'S COURSE SELECTION

- ◆ Minimum order for each course is two servings.
- ◆ Menu may vary slightly depending on availability.



The Most Popular Dish

Shirogane Luxury Course

For one person **¥7,700**

* Minimum order is two servings
[Total of nine dishes]



If in doubt, this is the one!
The most popular standard course
at Sensho

- Assorted Sashimi
Beef Sashimi, Tongue (Tan) sashimi,
Wine flavored Sashimi, Omasun (Senmai) Sashimi
- Yaki-shabu
- Grilled with Salt
Premium Outside Skirt(Jo-Harami)
Premium Tongue (Jo-Tan)
Premium Sirloin (Jo-Rosu)
- Grilled with Sauce
Short rib (Kalbi), Assorted offals (Horumon)
(Large intestine (Shimacho), Premium rumen (Jo-mino),
Thick blood vessel (Korikori), Liver)
- Assorted Kimuchi
- Korean pancake
(Chijimi) with seafood
- Stone-roasted Bibimbap or Cold Noodles
- Dessert

The Hard Working Person's Reward Course

For one person **¥5,500**

* Minimum order is two servings [Total of seven dishes]

A casual course to enjoy SENSHO's specialty meat.

- Assorted Sashimi
Beef Sashimi, Tongue
(Tan) sashimi,
Omasun (Senmai) Sashimi
- Grilled with Salt
Premium Outside Skirt(Jo-Harami)
Premium Tongue (Jo-Tan)
Premium Sirloin (Jo-Rosu)
- Grilled with Sauce
Short rib (Kalbi),
Assorted offals (Horumon)
- Stone-roasted Bibimbap
or Cold Noodles

* All listed prices include tax.

SENSHO'S GRILLED DISH



Yaki-shabu

¥1,760

For one person

Baked by our staff

★The Most Popular Dish★

- Tongue (Tan) **¥1,430**
- Premium Tongue (Jo-Tan)..... **¥2,200**
- Premium Tongue (Jo-Tan) (1/2) **¥1,100**



Premium Tongue

- Short Rib (Kalbi) **¥1,100**
- Premium Short Rib (Kalbi) **¥1,980**
- Premium Short Rib (Kalbi)..... **¥1,100**

- Sirloin (Rosu) **¥1,100**
- Premium Sirloin (Jo-Rosu) **¥1,980**
- Premium Sirloin (Jo-Rosu) (1/2) .. **¥1,100**

- Outside Skirt(Harami) **¥1,320**
- Premium Outside Skirt (Jo-Harami) **¥1,980**
- Premium Outside Skirt(Jo-Harami) (1/2) **¥1,100**



Premium Outside Skirt

- Diced Steak with Hanging Tender(Sagari) **¥1,760**
- Premium Tenderloin (Jo-Hire) **¥5,500**



Premium Tenderloin

- Sirloin Steak **¥4,400**



Sirloin Steak

- Thigh Meat **¥1,760**

- Large Intestine (Shimacho, Premium Offals) **¥990**
- Premium Rumen (Jo-mino) **¥990**
- Grilled Liver **¥880**
- Thick Blood Vessel (Korikori) **¥880**
- Half & Half (2 kinds) **¥1,100**

* All listed prices include tax.

SENSHO'S GRILLED DISH

For those who want to enjoy the taste of red meat



Sensho's Lean Mean Set

For two adults

¥11,000

- Premium Tongue (Jo-Tan)
- Premium Outside Skirt (Jo-Harami)
- Premium Short Rib (Jo-Kalbi)
- Premium Tenderloin (Jo-Hire)
- Premium Sirloin (Jo-Rosu)



Shensho's Lean Mean Set



Family Set



Family Set

For two adults + two children

¥8,800

- Premium Tongue (Jo-Tan)
- Premium Short Rib (Kalbi)
- Premium Sirloin (Jo-Rosu)
- Premium crunchy texture (Jo-Korikori)
- Premium intestine (Jo-shimacho)

Chicken & Pork

- Arita Chicken..... ¥880
- Black Pork Back Ribs..... ¥880
- Sausage..... ¥660

Seafood

- Assorted Squid and Shrimp ¥1,100



Vegetables

- Assorted Vegetables for Grill ¥770
- Vegetable of Your Choice ¥330

- | | |
|---------------------|--------------------|
| ■ Shiitake Mushroom | ■ Shimeji Mushroom |
| ■ Enoki Mushroom | ■ Onion |
| ■ Cabbage | ■ White Leek |
| ■ Carrot | ■ Eggplant |

- Grilled Elingi Mushroom ¥660
- Grilled Garlic with Oil ¥660
- Grilled Mushrooms with Herb ¥990
Butter in Foil Packet
- Chopped Green Hot Pepper..... ¥440

* All listed prices include tax.

The Best Dishes

Ippin

- Seafood pancakes..... ¥1,210 (in cheese +¥110)
- leek pancake..... ¥990 (in cheese +¥110)
- recommend** "Godzilla" korean pancakes ¥1,210
(green pepper and cheese)

- Assorted Namul ¥990
- Namul of Your Choice
(Bean Sprouts, Royal Fern, Spinach, Radish) ¥440 each



Assorted Namul

- Assorted Kimuchi..... ¥990
- Kimuchi of Your Choice ¥550 each



Assorted Kimuchi

- Grilled Tail in Foil Packet ¥2,750
- Spicy Cod Innards (Chanja) ¥770
- Korean Style Seasoned Seaweed ¥330
- Beef Tendon with Ponzu Sauce ... ¥660
- Salad with Wine Flavored Beef ¥1,100



Salad with Wine Flavored Beef

- Sensho Salad (Pickles) ¥990
- Korean Style Salad ¥990
- Green Salad ¥880
- Fruit Tomato ¥990
- Sliced Tomato ¥440
- Korean Lettuce ¥550



Korean Style Salad

SENSHO'S RICE AND NOODLE DISHES

● Lightly Flavored Udon Noodle with Beef
..... ¥880

● Lightly Flavored Udon Noodle with Beef
(1/2) ¥660



Lightly Flavored Udon Noodle with Beef



Gohan-Men

🍴 Shabu sashimi bowl

¥1,870



Shabu sashimi bowl

● Korean Cold Noodle ¥1,100

● Korean Cold Noodle (1/2) ¥660

● Tail Gukbup ¥1,980

● Tail Soup ¥1,760



Korean Style Hot Pot with Tofu (Tofu Jjigae)

● Sensho Style Hot Pot with Seafood (Beef Tendon Jjigae)
¥1,100

● Korean Style Hot Pot with Beef Tendon (Beef Tendon Jjigae)
¥990

● Korean Style Hot Pot with Tofu (Tofu Jjigae)
¥880



Stone-roasted Bibimbap

● Stone-roasted Bibimbap
(with Wakame Seaweed Soup)
¥1,320

● Bibimbap
(with Wakame Seaweed Soup)
¥1,320

● Egg Soup ¥440

● Wakame Seaweed Soup ¥440

● Egg Wakame Seaweed Soup ¥660

● Rice (Large Bowl) ¥440

● Rice (Medium Bowl) ¥330

● Rice (Small Bowl) ¥220

* All listed prices include tax.

SENSHO'S DRINK MENU

SWEET POTATO LIQUOR(SHOCHU)

Shochu



Kagoshima

Mitake

Alcohol content 25 degree
koji malt
white koji malt

Mitake Shuzo, the brewery of Mitake, moved to Yakushima island in 1958 and began producing sweet potato liquor. In Yakushima, a registered island on the World Natural Heritage, the brewery utilizes a rich water source filtered through wildwood using thousands-of-years-old cedar trees as brewing water. The island's water source has been selected as one of the "Best Natural Waters in Japan." When served with hot water, you can enjoy a mellow and robust aroma unique to sweet potatoes. The liquor actually has a refreshing and crisp taste.

- With Water ... ¥660
- On the rocks...¥770
- Purchase a bottle to keep at the bar (900ml) ¥4,620



Kagoshima

Akarui Nouson

Alcohol content 25 degree
koji malt
white and yellow koji malt

The brewery pursued a rich and crisp taste by blending black koji malt and white koji malt. Traditional and dry, the liquor pairs well with various dishes. Enjoy the aroma, rich flavor, and the after taste of the steamed sweet potatoes.

- With Water ... ¥660
- On the rocks ¥770
- Purchase a bottle to keep at the bar (900ml) ¥4,620



Kagoshima

Sekitoba

Alcohol content 25 degree
koji malt
white koji malt

The brewery uses Kogane-Sengan sweet potatoes from Kagoshima, quality spring water from Shirasu volcanic soil, white koji malt, and an atmospheric distillation technique to produce this liquor. The liquor undergoes a special distillation process to remove any unpleasant taste without compromising flavor.

- With Water ... ¥770
- On the rocks...¥880
- Purchase a bottle to keep at the bar(900ml) ¥5,830

Kuro-Kirishima/Hakata-no-Hana/Shiro

- With Water¥550
- On the rocks...¥660

- Purchase a bottle to keep at the bar(900ml) ¥2,750

Japanese Sake

Nihonshu



Fukuoka

The Best Quality Horin Junmai Daiginjo

Alcohol content 15.7 degree
Sake Meter Value +2.0
Sake Acidity 1.4

The best in class, highest-grade Sake brand from Gekkeikan. The maker produced this Sake specifically to communicate the depth and width of the world of Sake. Enjoy the fruity aroma and smoothness through the throat.

- 300 ml ¥1,760



Niigata

Refined Sake Horin Junmai Daiginjo

Alcohol content 14.5 degree
Sake Meter Value +5.0
Sake Acidity 1.3

The name comes from the Chinese philosopher, Lao Tzu's quote "The most ideal living (jozen) is like water." The liquor has a light and crispy taste and fresh and fruity aroma. It also has a mild umami and after taste of Junmai. It is a flexible, pure, and as the name suggests, water-like Sake, so it is enjoyable even to Sake beginners.

- 300 ml ¥1,760



Fukuoka

Refined Sake Kitayama Kansansui Junmaishu

Alcohol content 15.7 degree
Sake Meter Value +2.0
Sake Acidity 1.4

The brewery is located at the base of Mt. Shakadake and Mt. Gozendake, the highest mountains in Fukuoka. In winter the facility is surrounded by silverly-white mountains. This Sake is produced in deep mountains and dark valleys. This junmai-shu is brewed by polishing Yamadanishiki, a rice suitable for sake brewing, and Yume-ichiken, a rice produced in Fukuoka Prefecture, to 55% using subterranean water from the clear stream of Yabe River. It is then carefully brewed with a low temperature, long-term fermentation process to bring out a light aroma and crisp flavor.

- 300 ml ¥1,760

Fukuoka Hakushika Chokara

[By the glass] ¥650

Kumamoto Kouro

[By the glass] ¥650

Hiroshima Suishin

[By the glass] ¥660

Alcohol

Beverages

Onomimono

- Draft Beer (Medium Glass) ¥ 770
- Draft Beer (Small Glass) ¥ 440
- Bottled Beer (Kirin or Asahi) ¥ 770

- Non-Alcoholic Beer ¥ 770

- Whiskey "Kaku" [on the rocks] ¥ 770
- Whiskey "Kaku" [with water] ¥ 770
- Whiskey "Kaku" [with soda] ¥ 880

- Plum Wine (with soda) ¥ 660
- Plum Wine (on the rocks/with water)..... ¥ 880

- Sweet Potato Liquor with Soda and Lemon (Lemon Chuhai) ... ¥ 550
- Sweet Potato Liquor with Soda and Grapefruit (Grapefruit Chuhai)... ¥ 550

- Sparkling wine 1/2
.....¥ 3,850 ~
- Glass of wine ¥ 770
- Bottle ¥ 3,850 ~



Wine, champagne and sparkling wine are available on a separate sheet


Soft Drink

- Black Oolong Tea ¥ 660
- Oolong Tea ¥ 440
- Cola ¥ 440
- Orange Juice ¥ 440
- Calpico (Calpis) ¥ 440
- Perrier ¥ 660
- Chardonnay Sparkling (non-alcoholic) ¥ 550
- Blackcurrant Orange (non-alcoholic) ... ¥ 550
- Ginger Ale (Spicy) ¥ 550
- Tomato Juice ¥ 550

D
e
s
s
e
r
t


Dessert

Ice Cream


 Vanilla Ice Cream with
Godiva Chocolate

¥660




 Vanilla Ice Cream with
Rice-flour Dumplings(Shiratama) ¥660



 Vanilla Ice Cream with
Brown Sugar Syrup and Roasted Soybean Flour ¥660



 Seasonal Ice Cream

¥660

